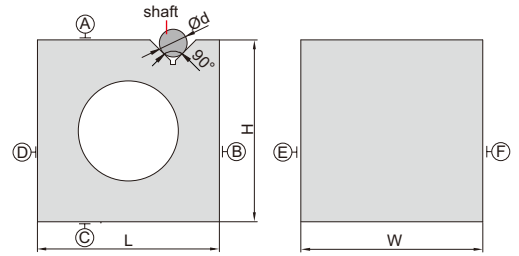


GRANITE SQUARE WITH V GROOVE

- Parallelism and squareness of A, B, C, D, E and F: $6\mu\text{m}$
- Parallelism and squareness of V groove to A, B, C, D, E and F: $6\mu\text{m}$



4142-200



Code	Size (LxWxH)	Range of shaft ($\varnothing d$)
4142-200	200x200x200mm	9~70mm

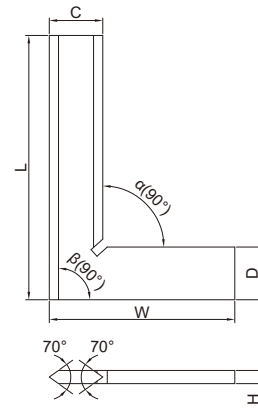
90° BEVELED EDGE SQUARES

10

- Satin chrome plating
- Beveled edges for inside and outside measurements
- Made of hardened stainless steel



4790-0100



DIN875 grade 00

(mm)

Code	Size (LxW)	Squareness		C	D	H
		Inside (α)	Outside (β)			
4790-050	50x40mm	$2.4\mu\text{m}$	$2.5\mu\text{m}$	13	13	4
4790-075	75x50mm	$2.6\mu\text{m}$	$2.8\mu\text{m}$	15	15	4
4790-0100	100x70mm	$2.8\mu\text{m}$	$3.0\mu\text{m}$	20	20	5
4790-0150	150x100mm	$3.2\mu\text{m}$	$3.5\mu\text{m}$	30	30	6
4790-0200	200x130mm	$3.7\mu\text{m}$	$4.0\mu\text{m}$	34	34	7
4790-0250	250x165mm	$4.2\mu\text{m}$	$4.5\mu\text{m}$	35	35	7
4790-0300	300x200mm	$4.6\mu\text{m}$	$5.0\mu\text{m}$	40	40	8

DIN875 grade 0

(mm)

Code	Size (LxW)	Squareness		C	D	H
		Inside (α)	Outside (β)			
4790-500	50x40mm	$6\mu\text{m}$	$6\mu\text{m}$	13	13	4
4790-750	75x50mm	$6\mu\text{m}$	$7\mu\text{m}$	15	15	4
4790-1000	100x70mm	$7\mu\text{m}$	$7\mu\text{m}$	20	20	5
4790-1500	150x100mm	$7\mu\text{m}$	$8\mu\text{m}$	30	30	6
4790-2000	200x130mm	$8\mu\text{m}$	$9\mu\text{m}$	34	34	7
4790-2500	250x165mm	$9\mu\text{m}$	$10\mu\text{m}$	35	35	7
4790-3000	300x200mm	$10\mu\text{m}$	$11\mu\text{m}$	40	40	8

90° TOOL MAKER SQUARES

- DIN875 grade 00
- Beveled edge for inside measurement
- Made of hardened stainless steel

(mm)

Code	Size (LxW)	Squareness		C	D	H
		Inside (α)	Outside (β)			
4794-025	25x20mm	$2.2\mu\text{m}$	$2.3\mu\text{m}$	4	6.5	3.5
4794-040	40x28mm	$2.3\mu\text{m}$	$2.4\mu\text{m}$	5.5	8.5	3.5



4794-040

