

CENTER 300/301/302/303 Thermometer

This series of thermal couple thermometers are micro controller based testers. With very intuitive interface, the user can fully operate the tester without second thought. Some of the units (302 303) are digitally calibrated for long time stability. The whole series are equipped with RS232 interface for advance applications.



FEATURES:

- Timer Function (300, 302)
- Dual Input (301, 303)
- Dual Display (301, 303)
- RS232 interface
- Auto Power OFF
- Resolution 0.1°C, 0.1°F

SPECIFICATIONS

| | |
|----------------|--|
| Range | K type: -200 ~ 1370°C; -200 ~ 2498°F (300 ~ 303) J type: -200 ~ 760°C; -200 ~ 1400°F (302, 303) |
| Accuracy | ±0.1%+0.7°C, ±0.1%+1.4°F |
| Resolution | 0.1°C; 0.1°F |
| Operation Temp | 0°C ~ 50°C (< 80%RH) |
| Storage Temp | -20°C ~ 60°C (< 70%RH) |
| Battery | 9V battery |
| Dimensions | 184x64x30 mm |
| Weight | Approx.210g |

STANDARD ACCESSORIES

| Model | Battery | Operation Manual | Carrying Case | K Type bead sensor | RS-232 cable | Software |
|-----------|---------|------------------|---------------|--------------------|--------------|----------|
| CENTER300 | ● | ● | ● | TP-K01 X 1PC | Option | Option |
| CENTER301 | ● | ● | ● | TP-K01 X 2PCS | | |
| CENTER302 | ● | ● | ● | TP-K01 X 1PC | | |
| CENTER303 | ● | ● | ● | TP-K01 X 2PCS | | |



300/301 K TYPE

302/303 K.J TYPE

CENTER 307/308 Compact Size Thermometer

CENTER 307/308 thermometers are compact size low cost units. It will fulfill the need for most of every day applications. Even though this seems to be an entry level unit, the measuring range is till as wide as the sensor can provide with sufficient accuracy for applications.



FEATURES:

- Mini Size
- Dual Input (308)
- Dual Display (308)
- Auto Power OFF
- Time Display

SPECIFICATIONS

| | |
|------------------|------------------------------|
| Range | -200 ~ 1370°C; -328 ~ 2498°F |
| Accuracy | ±0.3%+1°C, ±0.3%+2°F |
| Input Protection | 60V DC or 24Vrms AC Maximum |
| Resolution | 0.1°C; 0.1°F |
| Operation Temp | 0°C ~ 40°C (< 80%RH) |
| Storage Temp | -10°C ~ 60°C (< 70%RH) |
| Battery | 9V battery |
| Dimensions | 164x54x34 mm |
| Weight | Approx.200g |

STANDARD ACCESSORIES

| Model | Battery | Operation Manual | K Type bead sensor |
|-----------|---------|------------------|--------------------|
| CENTER307 | ● | ● | TP-K01 X 1PC |
| CENTER308 | ● | ● | TP-K01 X 2PCS |



CENTER 305/306 Datalogger Thermometer



These data loggers are designed for advanced applications which require the temperature data for a period. With CENTER 305 or 306, the user can collect the information very easily. The operating interface is designed in a very intuitive way so that the user can locate the function by just look at the panel. The build in real time clock will give every set of recording data a time stamp so that every data can be traced back to the time it occurred. The bundled window software is not only used to read the recording data but it provides a virtual panel in the window to fully control the tester.

FEATURES:

- Dual Input (306)
- Triple Display
- Time Function
- RS232 Interface
- With Window Software
- 16,000 Records Data logger (306)
- Resolution 0.1°C, 0.1°F



SPECIFICATIONS

| | |
|----------------|--------------------------------------|
| Range | K type: -200 ~ 1370°C; -328 ~ 2498°F |
| Accuracy | ±0.3% + 1°C, ±0.3% + 2°F |
| Resolution | 0.1°C; 0.1°F |
| Operation Temp | 0°C ~ 50°C (< 80%RH) |
| Storage Temp | -20°C ~ 60°C (< 70%RH) |
| Battery | 9V battery |
| Dimensions | 184x64x30 mm |
| Weight | Approx. 210g |

STANDARD ACCESSORIES

| Model | Battery | Operation Manual | Carrying Case | K Type bead sensor | RS-232 Cable | Software |
|-----------|---------|------------------|---------------|--------------------|--------------|----------|
| CENTER305 | • | • | • | TP-K01 X 1PC | • | • |
| CENTER306 | • | • | • | TP-K01 X 2PCS | • | • |



CENTER 304/309 Four Channels Thermometer

309 DATALOGGER

304 K TYPE



LED Back Light



In some applications, the temperature is concerned at more than two points. This is why we provide the four channel model thermometer 304 and 309. The operation interface is intuitive and all the temperature data are shown on the LCD at the same time so that no extra step for the user to get the reading.

FEATURES:

- Auto Range
- Four Channel Input
- Four Channel Display
- Wide Measuring Range (304)
- With Window Software (309)
- RS-232 Interface
- 16,000 Records Data Logger each channel (309)
- Resolution 0.1°C, 0.1°F



SPECIFICATIONS

| | |
|------------------|--------------------------------------|
| Range | K type: -200 ~ 1370°C; -328 ~ 2498°F |
| Accuracy | ±0.3% + 1°C, ±0.3% + 2°F |
| Resolution | 0.1°C; 0.1°F |
| Input Protection | 60V DC or 24Vrms AC Maximum |
| Operation Temp | 0°C ~ 50°C (< 80%RH) |
| Storage Temp | -20°C ~ 60°C (< 70%RH) |
| Battery | 9V battery |
| Dimensions | 184x64x30 mm |
| Weight | Approx. 220g |

STANDARD ACCESSORIES

| Model | Battery | Operation Manual | Carrying Case | Temperature Probe | RS-232 Cable | Software |
|-----------|---------|------------------|---------------|-------------------|--------------|----------|
| CENTER304 | • | • | • | TP-K01 X 2PCS | Option | Option |
| CENTER309 | • | • | • | TP-K01 X 2PCS | • | • |



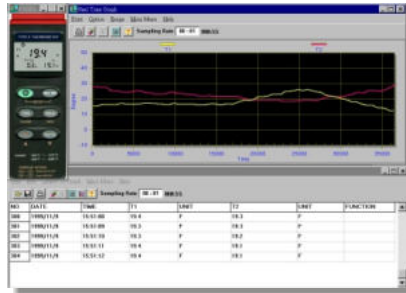
The comparison table of 300 series thermometers

● WINDOW BASED SOFTWARE INTERFACE

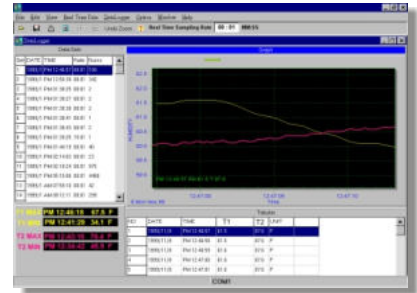
Main Control Window



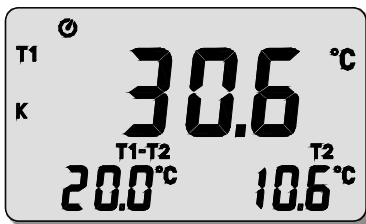
Real Time Graphic Window



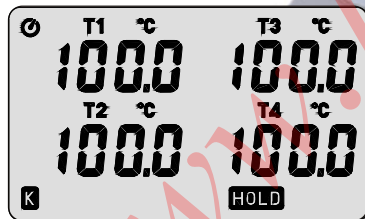
Data List Window



● LCD DISPLAY:

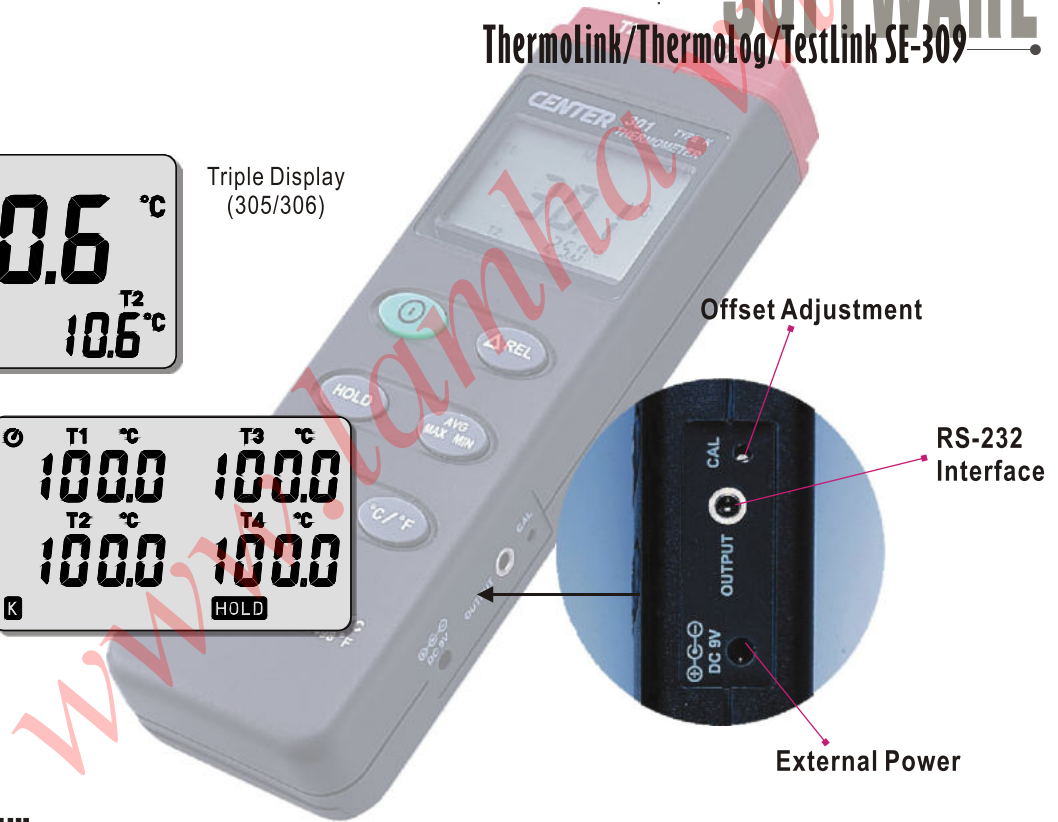


Triple Display
(305/306)



Four Channel Display
(304/309)

Thermolink/Thermolog/Testlink SE-309 SOFTWARE



Offset Adjustment

RS-232 Interface

External Power

FUNCTION TABLE

| MODEL | CENTER 300 | CENTER 301 | CENTER 302 | CENTER 303 | CENTER 304 | CENTER 305 | CENTER 306 | CENTER 307 | CENTER 308 | CENTER 309 |
|------------------|------------|------------|------------|------------|------------|------------|------------|------------|------------|------------|
| Input Channel | Single | Dual | Single | Dual | Four | Single | Dual | Single | Dual | Four |
| K Type Sensor | ● | ● | ● | ● | ● | ● | ● | ● | ● | ● |
| J Type Sensor | | | ● | ● | | | | | | |
| RS-232 Interface | ● | ● | ● | ● | ● | ● | ● | | | ● |
| Software | Option | Option | Option | Option | Option | ● | ● | | | ● |
| Data Logger | | | | | | ● | ● | | | ● |
| REL Function | ● | ● | ● | ● | ● | | | ● | ● | |
| CLOCK Function | | | | | | | | | | ● |
| TIMER Function | ● | | ● | | | | | | | |
| HOLD Function | ● | ● | ● | ● | ● | ● | ● | ● | ● | ● |
| MAX/MIN Function | ● | ● | ● | ● | ● | ● | ● | ● | ● | ● |
| Auto Power Off | ● | ● | ● | ● | ● | ● | ● | ● | ● | ● |