

**Alcoscan AL7000** is a hand held, portable breath alcohol tester to check subject's breath alcohol concentration with reliable accuracy.

► **No calibration required! Easy-Replace Sensor Panel and module**



### SPECIFICATIONS

1. Indication of B.A.C.: 0.00 to 4.00 ‰ or 0.000 to 0.400%BAC or 0.00 to 2.00 mg/l BrAC by LED display
2. Sensor: Semiconductor type alcohol sensor
3. Accuracy:  $\pm 0.01\%$ BAC at 0.05%BAC
4. Mouthpiece: use
5. Power: Two 1.5V "AA" size alkaline batteries and 12V cigar jack in car/ Auto Power off
6. Weights: 103g (Including Batteries)
7. Dimension(mm): 116 (height) X 50 (width) X 21 (thickness)
8. Audible warnings: 3 steps beep warning of alcohol detection with LED display
9. Available color: Silver
10. Certificate: CE, DOT



### Contents

- 1x Breathalyzer
- 2x AA size Alkaline Batteries
- 5x Mouthpiece
- 1x Pouch
- 1x Hand strap
- 1x Manual

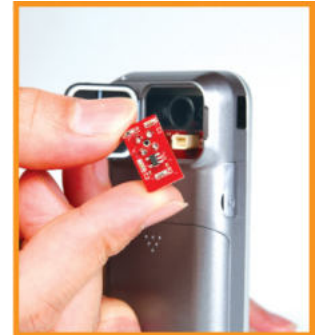
### PACKAGE

50pcs/Carton\*Size: 550 x 510 x 270(mm) / Weight: 18kg

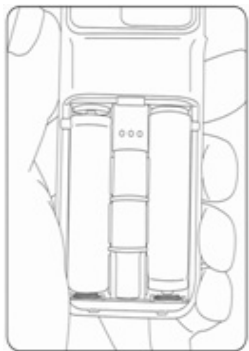
**What is a "Pre-Calibrated Replaceable Sensor Module"?**

Sentech Korea is the first breathalyzer company to introduce pre-calibrated replaceable modules (patent-pending) to the market. One of the main problems with using breathalyzers in critical applications is that the alcohol sensor, no matter what type, requires periodic re-calibration. Unfortunately, the re-calibration process requires that the breathalyzer be physically mailed or taken to a professional service center, at which point the device must be evaluated and proper steps must be taken for calibration with an expensive simulator system. The process is costly for both consumer and service center, and the delay of processing and shipping back-and-forth can be quite a loss. The Pre-Calibrated Replaceable Alcohol Sensor Module can eliminate the delays and complications of re-calibration by allowing you to simply "snap out" an old module and "snap in" a new module. This way, you can get back to reliable, accurate testing in a matter of seconds!

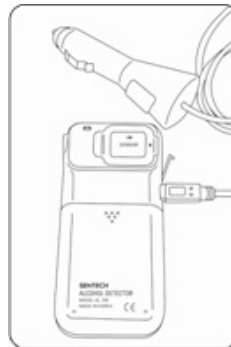
PREMIUM BREATHALYZER  
**ALCOSCAN**  
**AL7000**



**Remark**



Mouthpiece Holder  
It can keep 1pcs  
mouthpieces inside of  
breathalyzer.



12V Alternative power  
You can use alternative  
power from car cigar jack  
lighter with provided cable.

\*M.O.Q. 200pcs per order

\*Over 3Kpcs order's case, we will provide buyer designed gift box and logo imprinted without extra charge.

**Please contact**

Zip code: 10880

(Sinchon-dong) 21-6, Jimokro 75-gil, Paju-Si, Gyeonggi-Do, Korea

TEL: 82-31-8071-4400

FAX: 82-31-8071-4411

URL: [www.sentechkorea.com](http://www.sentechkorea.com)

E-mail: [sentech@sentechkorea.com](mailto:sentech@sentechkorea.com)